



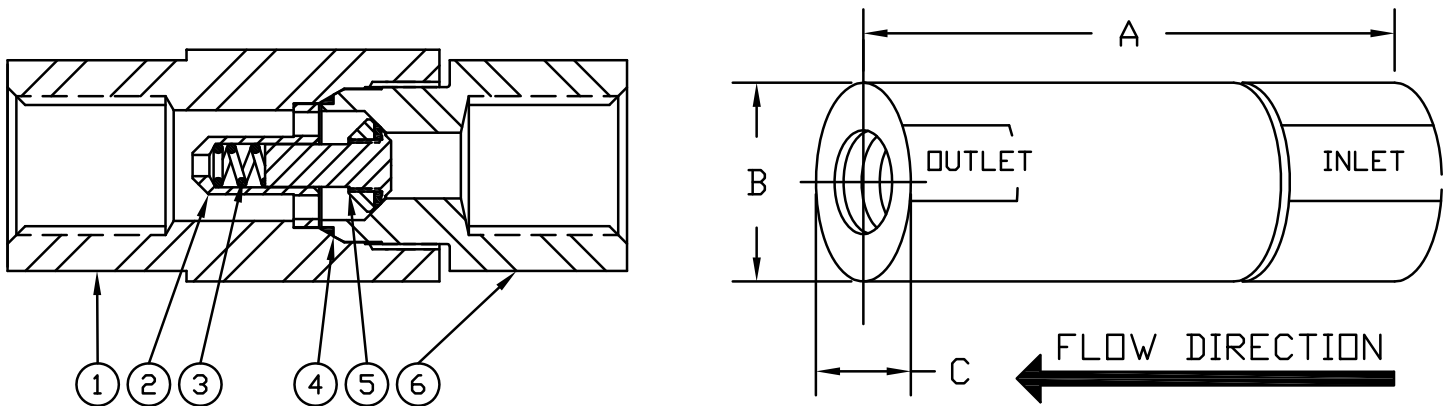
INLINE CHECK VALVE

MODEL 2000 - 2100 - 2200 - 2300

| DASH NUMBER | MS SIZE* | NPT SIZE | DIMENSIONS | | | MINIMUM ORIFICE SIZE | APPROX. WEIGHT |
|-------------|----------|----------|------------|---------|---------|----------------------|----------------|
| | | | A ±1/16 | B ±1/16 | C ±1/16 | | |
| -04 | 1/4 | 1/8 | 2-27/32 | 1" | 7/8 | .230 | 1/2# |
| -05 | 5/16 | 1/4 | 2-27/32 | 1" | 7/8 | .230 | 1/2# |
| -06 | 3/8 | 3/8 | 3-5/16 | 1-1/8 | 1" | .293 | 3/4# |
| -08 | 1/2 | 1/2 | 3-11/16 | 1-3/8 | 1-1/4 | .387 | 1# |

*ALL AREAS EQUAL TO OR GREATER THAN MS33649 TUBING OF SAME SIZE

CHECK VALVES ARE WITH STANDARD 3 PSIG MAX. CRACK SPRING. OTHER CRACKS AVAILABLE UPON REQUEST.



| ITEM NUMBER | PART NAME | MATERIAL CLASS |
|-------------|---------------|-------------------------|
| 1 | BODY | ASTM A479 TYPE 316 |
| 2 | CAGE | ASTM A479 TYPE 316 |
| 3 | SPRING | ASTM A313 TYPE 316 |
| 4 | SEAL | TEFLON, BUNA-N OR VITON |
| 5 | DISC ASSEMBLY | § ASTM A479 TYPE 316 |
| 6 | BASE | ASTM A479 TYPE 316 |

§ WITH TEFLON, KEL-F, VESPEL OR METAL SEATS

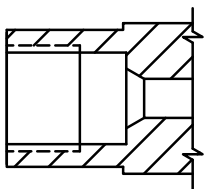
§ ALSO AVAILABLE IN "O" RING DESIGN FOR 3,000 WDG MAX.

OTHER MATERIAL CLASSES AVAILABLE UPON REQUEST.

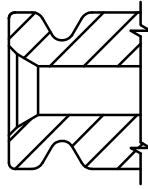
SEE PAGE 86 FOR HEAD LOSS CURVES AND Cv CHART.

SEE PAGE 93 & 94 FOR PART NUMBERING SYSTEM.

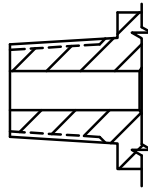
ALTERNATE END CONNECTIONS



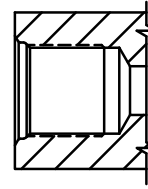
AMINCO



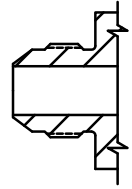
GRAYLOC



MALE NPT



MS33649



MS33656