



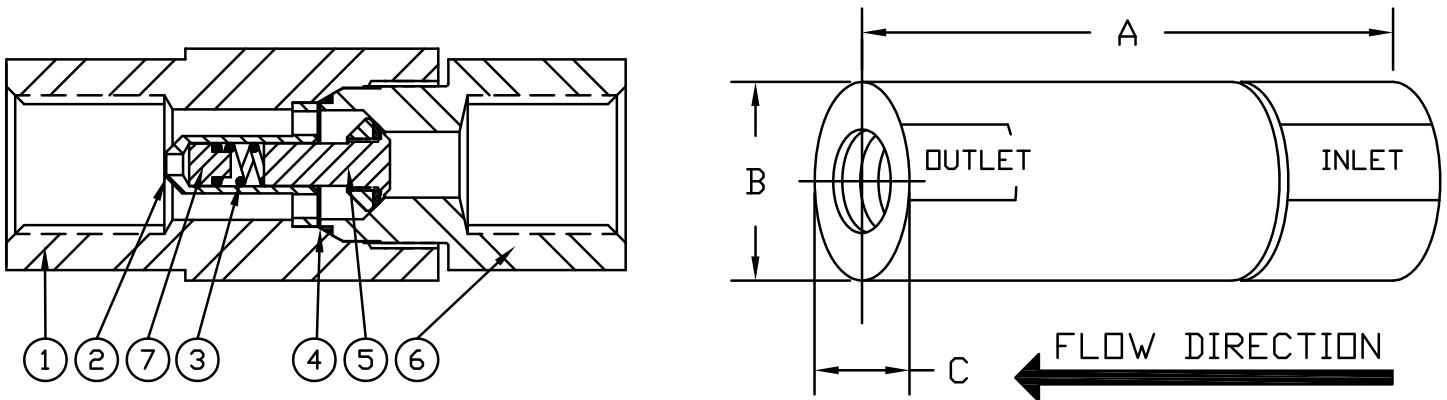
INLINE CHECK VALVE

MODEL 2000 - 2100 - 2200 - 2300

| DASH NUMBER | MS SIZE* | NPT SIZE | GRAYLOC SIZE | DIMENSIONS | | | MINIMUM ORIFICE SIZE | APPROX. WEIGHT |
|-------------|----------|----------|----------------------|------------|---------|---------|----------------------|----------------|
| | | | | A ±1/16 | B ±1/16 | C ±1/16 | | |
| -12 | 3/4 | 3/4 | 1/2, 3/4 | 4-3/4 | 1-7/8 | 1-3/4 | .604 | 3# |
| -16 | 1" | 1" | 1" GR-4 & -5 | 5-15/16 | 2-5/8 | 2-3/8 | .839 | 7# |
| -20 | 1-1/4 | 1-1/4 | 1" GR-11,1-1/4,1-1/2 | 8-15/32 | 3-1/2 | 3-1/4 | 1.073 | 17# |
| -24 | 1-1/2 | 1-1/2,2 | 2" | 9-7/16 | 4-1/4 | 4" | 1.307 | 30# |
| -32 | 2" | 2-1/2,3 | 2-1/2,3 | 11-11/16 | 5-15/16 | 5-1/2 | 1.776 | 70# |
| -48 | | 4" | 4" | 11-11/16 | 6-3/8 | 6-1/8 | 1.776 | 84# |

*ALL AREAS EQUAL TO OR GREATER THAN MS33649 TUBING OF SAME SIZE

CHECK VALVES ARE WITH STANDARD 3 PSIG MAX. CRACK SPRING. OTHER CRACKS AVAILABLE UPON REQUEST.



| ITEM NUMBER | PART NAME | MATERIAL CLASS |
|-------------|---------------|-------------------------|
| 1 | BODY | ASTM A479 TYPE 316 |
| 2 | CAGE | ASTM A479 TYPE 316 |
| 3 | SPRING | ASTM A313,TYPE 316 |
| 4 | SEAL | TEFLON, BUNA-N OR VITON |
| 5 | DISC ASSEMBLY | § ASTM A479 TYPE 316 |
| 6 | BASE | ASTM A479 TYPE 316 |
| 7 | SPRING PLATE | ASTM A479 TYPE 316 |

§ WITH TEFLON, KEL-F, VESPEL OR METAL SEATS

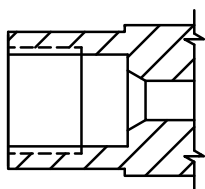
§ ALSO AVAILABLE IN "O" RING DESIGN FOR 3,000 WDG MAX.

OTHER MATERIAL CLASSES AVAILABLE UPON REQUEST.

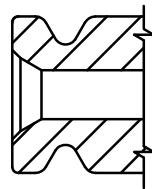
SEE PAGE 86 FOR HEAD LOSS CURVES AND Cv CHART.

SEE PAGE 93 & 94 FOR PART NUMBERING SYSTEM.

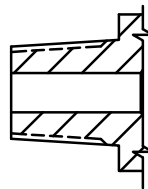
ALTERNATE END CONNECTIONS



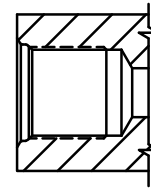
AMINCO



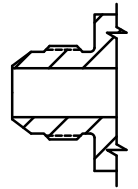
GRAYLOC



MALE NPT



MS33649



MS33656